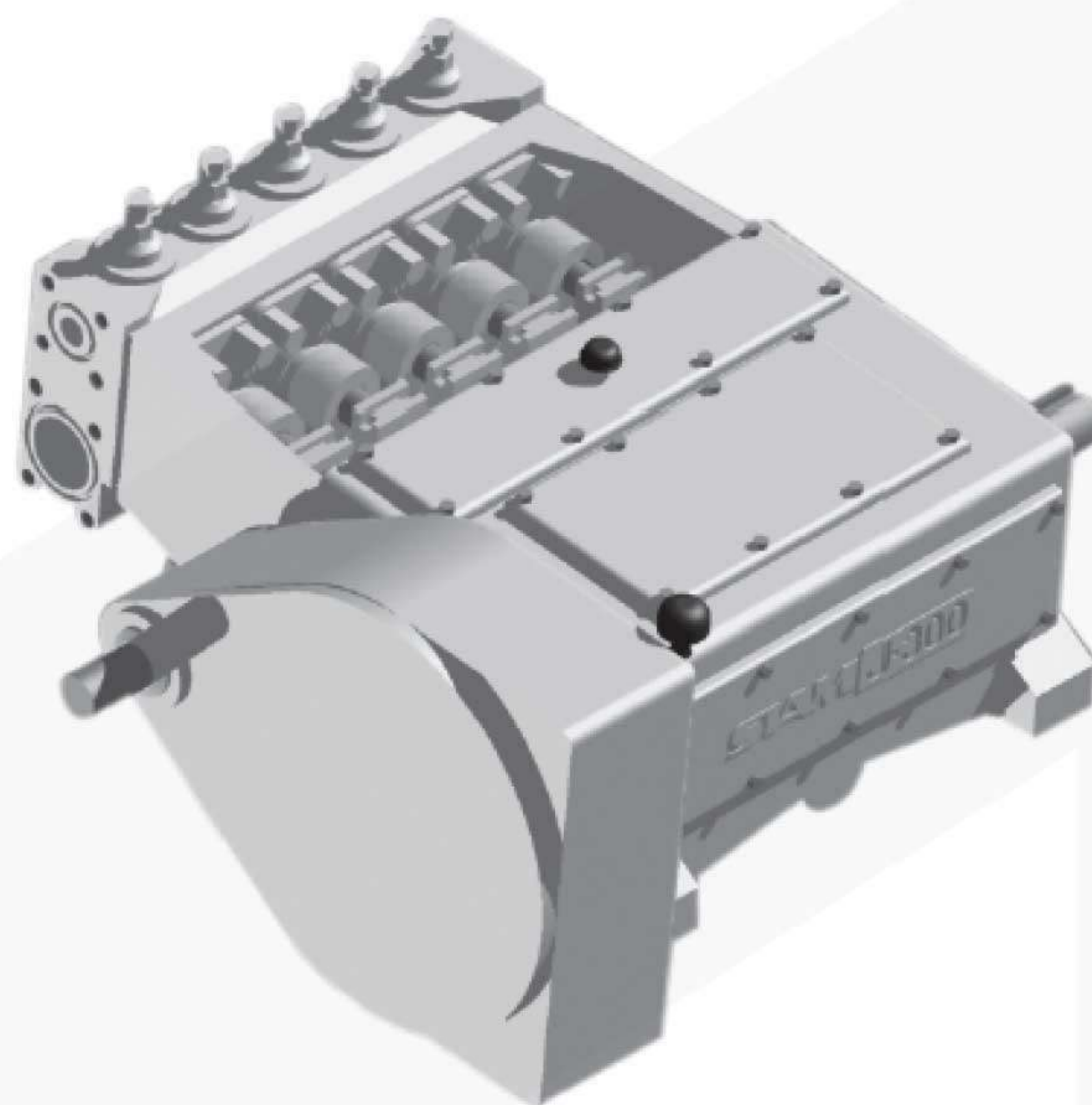


Bomba alternativa a émbolo buzo marca SIAM J300 quintuplex SIAM model J300 plunger pump quintuplex.

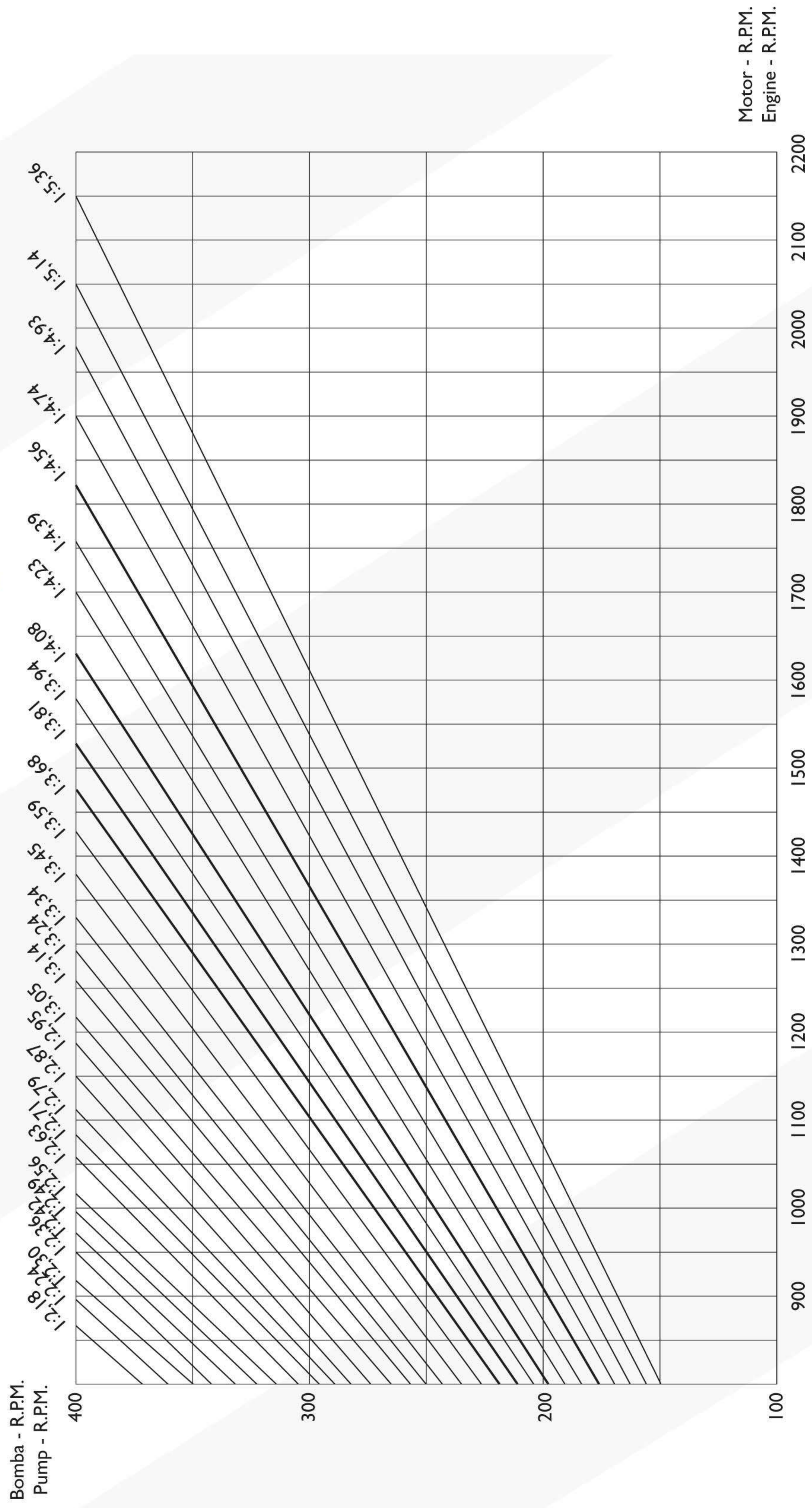
Especificaciones Specifications

| | |
|--|--|
| Potencia absorbida Input Horsepower | 300 HP 300 HP |
| Número de émbolos Number of plungers | 5 5 |
| Carrera Stroke length | 127 mm 5" |
| Velocidad de Operación Operating speeds | 100 - 400 rpm 100 - 400 rpm |
| Carga sobre el émbolo Plunger load | 4445 Kg 9800 lbs |
| Diámetro extremo cigüeñal Crankshaft end diameter | 123,77 mm / 123,83 mm 4,872" / 4,875" |
| Chavetero (ancho x profundidad) Keyway (width x depth) | 31,8 mm x 18 mm 1.1/4" x 11/16" |
| Capacidad de aceite, bomba / reductor Oil capacity, pump / gear reducer | 45,4 lts. / depende de la relación 12 gal. / it depends on gear |
| Relación engranajes disponibles Gear ratios available | 1:2,56 - 1:2,63 - 1:2,71 - 1:2,79 1:2,87 - 1:2,95 - 1:3,05 - 1:3,14 1:3,24 - 1:3,34 - 1:3,45 - 1:3,59 1:3,68 - 1:3,81 - 1:3,94 - 1:4,08 1:4,23 - 1:4,39 - 1:4,56 |
| Diámetro extremo piñón reductor Reducer pinion end diameter | 88,87 mm / x 88,9 mm 3,499" / 3,500 |
| Chavetero reductor (ancho x prof.) Reducer keyway (width x depth) | 22,2 mm x 14,3 mm 7/8" x 9/16" |
| Peso del reductor Gear reducer weight | 499 kg. 1100 lbs. |



| CARACTERÍSTICAS / FEATURES | PRESIÓN - PRESSURE | | | PETROLEO MOTRIZ PO |
|---|--------------------|--------------------|--------------------|--------------------------|
| | BAJA LOW | MEDIA MEDIUM | ALTA HIGH | |
| Peso bomba (Kg) Pump weight (lbs) | 3175 7000 | 3062 6750 | 3103 6840 | 2949 6500 |
| Ancho Máximo (mm) Maximum width (inches) | 1790,70 70. 1/2 | 1790,70 70. 1/2 | 1790,70 70. 1/2 | 1790,70 70. 1/2 |
| Largo máximo (mm) Maximum length (inches) | 1704,90 67.1/8 | 1631,95 | 1641,48 | 1631,95 |
| Alto máximo (mm) Maximum height (inches) | 698 27.1/2 | 610 24 | 562 22.1/8 | 529 20.13/16 |
| Diámetro succión (mm) Suction diameter (inches) | 8" ANSI-150 # RF | 6" NSD-600 # RJ | 6" NSD-600 # RJ | 6" NSD-600 # RJ |
| Diámetro Descarga (mm) Discharge diameter (inches) | 4" ANSI 600 RJ | 3" NSD-5000 # RJ | 2" ANSI-2500 # RJ | 2" ANSI-2500 # RJ |
| Presión hidrostática de prueba (Kg/cm2) Hydrostatic test pressure (p. s. i.) | 232 3300 | 422 6000 | 703 10000 | 703 10000 |

Reductor SIAM J-300 Gear Reducer SIAM J-300



Bomba alternativa a émbolo buzo marca SIAM, model J300L quintuplex. SIAM multiplex plunger pump, model J300L quintuplex.

| | | | | | | | |
|--|-------------------------------------|------------|----------------|---------------|---------------|---------------|---------------|
| ∅ Embolo ∅ Plunger | (mm) (inches) | 101,6 4 | 95,20 3.3/4 | 88,9 3.1/2 | 82,5 3.1/4 | 76,2 3 | 69,8 2.3/4 |
| Máxima presión de descarga Maximum discharge pressure | (Kg / cm ²) (P.S.I.) | 60 850 | 68 970 | 78,1 1110 | 91 1290 | 106,2 1510 | 116,0 1650 |
| Galones por min/r.p.m. Gallons per min/r.p.m. | | 1,36 | 1,195 | 1,041 | 0,898 | 0,765 | 0,643 |
| Barriles por día/r.p.m. Barrels per day/r.p.m. | | 46,628 | 40,971 | 35,691 | 30,788 | 22,229 | 22,046 |
| M3/día/r.p.m. M3/day/r.p.m. | | 7,4134 | 6,5140 | 5,6745 | 4,8950 | 4,1702 | 3,5051 |

| VELOCIDAD BOMBA RPM PUMP SPEED R.P.M. | POTENCIA ABSORBIDA INPUT HORSEPOWER HP | HP HIDRAULICO HP HIDRAULIC | GPM | BBLS/ DAY | M3/ DAY | GPM | BBLS/ DAY | M3/ DAY | GPM | BBLS/ DAY | M3/ DAY | GPM | BBLS/ DAY | M3/ DAY | GPM | BBLS/ DAY | M3/ DAY | GPM | BBLS/ DAY | M3/ DAY |
|--|---|----------------------------------|-----|--------------|------------|-----|--------------|------------|-----|--------------|------------|-----|--------------|------------|-----|--------------|------------|-----|--------------|------------|
| 400 | 300,0 | 271,0 | - | - | - | 478 | 16382 | 2606 | 416 | 14270 | 2270 | 359 | 12310 | 1958 | 306 | 10487 | 1668 | 257 | 8815 | 1402 |
| 350 | 262,6 | 236,6 | 476 | 16313 | 2595 | 418 | 14334 | 2280 | 364 | 12487 | 1986 | 314 | 10771 | 1713 | 268 | 9176 | 1460 | 225 | 7713 | 1227 |
| 300 | 225,0 | 202,8 | 408 | 13983 | 2224 | 358 | 12286 | 1954 | 312 | 10703 | 1702 | 269 | 9233 | 1469 | 229 | 7866 | 1251 | 193 | 6611 | 1052 |
| 250 | 187,5 | 169,0 | 340 | 11652 | 1853 | 299 | 10239 | 1629 | 260 | 8919 | 1419 | 224 | 7694 | 1224 | 191 | 6555 | 1043 | 161 | 5509 | 876 |
| 200 | 150,0 | 135,2 | 272 | 9322 | 1483 | 239 | 8191 | 1303 | 208 | 7135 | 1135 | 179 | 6155 | 979 | 153 | 5244 | 834 | 128 | 4407 | 701 |
| 150 | 112,0 | 101,4 | 204 | 6991 | 1112 | 179 | 6143 | 977 | 156 | 5351 | 851 | 135 | 4616 | 734 | 115 | 3933 | 626 | 96 | 3306 | 526 |
| 100 | 75,0 | 67,7 | 136 | 4661 | 741 | 119 | 4095 | 651 | 104 | 3568 | 567 | 90 | 3078 | 490 | 76 | 2622 | 417 | 64 | 2204 | 351 |

Bomba alternativa a émbolo buzo marca SIAM, modelo J300M quintuplex. SIAM multiplex plunger pump, model J300M quintuplex.

| | | | | | | | | |
|--|-------------------------------------|---------------|---------------|---------------|---------------|---------------|---------------|---------------|
| ∅ Embolo ∅ Plunger | (mm) (inches) | 69,8 2.3/4 | 66,6 2.5/8 | 63,5 2.1/2 | 60,3 2.3/8 | 57,1 2.1/4 | 53,9 2.1/8 | 50,8 2" |
| Máxima presión de descarga Maximum discharge pressure | (Kg / cm ²) (P.S.I.) | 127 1800 | 139,2 1980 | 153,6 2185 | 169,4 2410 | 189,1 2690 | 211,0 3000 | 211,0 3000 |
| Galones por min/r.p.m. Gallons per min/r.p.m. | | 0,643 | 0,586 | 0,531 | 0,479 | 0,430 | 0,384 | 0,340 |
| Barriles por día/r.p.m. Barrels per day/r.p.m. | | 22,046 | 20,091 | 18,206 | 16,423 | 14,743 | 13,166 | 11,657 |
| M3/día/r.p.m. M3/day/r.p.m. | | 3,5051 | 3,1942 | 2,8946 | 2,6110 | 2,3450 | 2,0933 | 1,8530 |

| VELOCIDAD BOMBA RPM PUMP SPEED R.P.M. | POTENCIA ABSORBIDA INPUT HORSEPOWER HP | HP HIDRAULICO HP HIDRAULIC | GPM | BBLS/ DAY | M3/ DAY | GPM | BBLS/ DAY | M3/ DAY | GPM | BBLS/ DAY | M3/ DAY | GPM | BBLS/ DAY | M3/ DAY | GPM | BBLS/ DAY | M3/ DAY | GPM | BBLS/ DAY | M3/ DAY |
|--|---|----------------------------------|-----|--------------|------------|-----|--------------|------------|-----|--------------|------------|-----|--------------|------------|-----|--------------|------------|-----|--------------|------------|
| 400 | 300,0 | 271,0 | 257 | 8815 | 1402 | 234 | 8033 | 1278 | 212 | 7279 | 1158 | 191 | 6566 | 1044 | 172 | 5897 | 938 | 153 | 5264 | 837 |
| 350 | 262,6 | 236,6 | 225 | 7713 | 1227 | 205 | 7029 | 1118 | 186 | 6370 | 1013 | 168 | 5745 | 914 | 150 | 5160 | 821 | 134 | 4606 | 733 |
| 300 | 225,0 | 202,8 | 193 | 6611 | 1052 | 176 | 6025 | 958 | 159 | 5460 | 868 | 144 | 4925 | 783 | 129 | 4423 | 704 | 115 | 3948 | 628 |
| 250 | 187,5 | 169,0 | 161 | 5509 | 876 | 146 | 5021 | 799 | 133 | 4550 | 724 | 120 | 4104 | 653 | 107 | 3686 | 586 | 96 | 3290 | 523 |
| 200 | 150,0 | 135,2 | 128 | 4407 | 701 | 117 | 4016 | 639 | 106 | 3640 | 579 | 96 | 3283 | 522 | 86 | 2949 | 469 | 77 | 2632 | 419 |
| 150 | 112,0 | 101,4 | 96 | 3306 | 526 | 88 | 3012 | 479 | 80 | 2730 | 434 | 72 | 2462 | 392 | 64 | 2211 | 352 | 58 | 1974 | 314 |
| 100 | 75,0 | 67,7 | 64 | 2204 | 351 | 59 | 2008 | 319 | 53 | 1820 | 289 | 48 | 1642 | 261 | 43 | 1474 | 235 | 38 | 1316 | 209 |

HP Absorbida: Basado en 90 % de rendimiento mecánico. / Input HP: Based on 90% Mechanical efficiency.

Volumen de desplazamiento: Basado sobre 100% de rendimiento volumétrico. / Volume: Based on 100 % volumetric efficiency.

Bomba Alternativa a émbolo marca SIAM, modelo J300H quintuplex. SIAM multiplex plunger pump model J300H quintuplex.

| | | | | | | |
|--|------------------------|----------------|-----------------|-----------------|-----------------|-----------------|
| ∅ Embolo | (MM) | 50,8 | 47,6 | 44,4 | 41,2 | 38,1 |
| ∅ Plunger | (inches) | 2 | 1.7/8 | 1.3/4 | 1.5/8 | 1.1/2 |
| Máxima presión de descarga Maximum discharge pressure | (Kg / CM2) (P.S.I.) | 239,4 3.400 | 271,04 3.855 | 312,87 4.450 | 351,54 5.000 | 351,54 5.000 |
| Galones por min/r.p.m. Gallons per min/r.p.m. | | 0.340 | 0.299 | 0.260 | 0.224 | 0.191 |
| Barriles por día/r.p.m. Barrels per day/r.p.m. | | 11,657 | 10,251 | 8,914 | 7,680 | 6,549 |
| M3/día/r.p.m. M3/day/r.p.m. | | 1,8530 | 1,6298 | 1,4172 | 1,2210 | 1,0400 |

| VELOCIDAD BOMBA R.P.M. PUMP SPEED R.P.M. | POTENCIA ABSORBIDA INPUT HORSEPOWER HP | HP HIDRAULICO HP HIDRAULIC | GPM | BBLs/ DAY | M3/ DAY | GPM | BBLs/ DAY | M3/ DAY | GPM | BBLs/ DAY | M3/ DAY | GPM | BBLs/ DAY | M3/ DAY | GPM | BBLs/ DAY | M3/ DAY |
|---|---|-------------------------------|-----|-----------|---------|-----|-----------|---------|-----|-----------|---------|-----|-----------|---------|-----|-----------|---------|
| 400 | 300,0 | 271,0 | 136 | 4665 | 741 | 119 | 4099 | 652 | 104 | 3564 | 567 | 90 | 3071 | 488 | 76 | 2615 | 416 |
| 350 | 262,6 | 236,6 | 119 | 4077 | 649 | 105 | 3586 | 570 | 91 | 3119 | 496 | 78 | 2687 | 427 | 67 | 2289 | 364 |
| 300 | 225,0 | 202,8 | 102 | 3495 | 556 | 90 | 3074 | 489 | 78 | 2679 | 425 | 67 | 2303 | 366 | 57 | 1962 | 312 |
| 250 | 187,5 | 169,0 | 85 | 2912 | 463 | 75 | 2562 | 407 | 65 | 2228 | 354 | 56 | 1919 | 305 | 48 | 1635 | 260 |
| 200 | 150,0 | 135,2 | 68 | 2330 | 371 | 60 | 2049 | 326 | 52 | 1782 | 283 | 45 | 1535 | 244 | 38 | 1308 | 208 |
| 150 | 112,0 | 101,4 | 51 | 1747 | 278 | 45 | 1537 | 244 | 39 | 1337 | 213 | 34 | 1151 | 183 | 29 | 981 | 156 |
| 100 | 75,0 | 67,7 | 34 | 1165 | 185 | 30 | 1025 | 163 | 26 | 891 | 142 | 22 | 768 | 122 | 19 | 654 | 104 |

Bomba Alternativa a émbolo buzo marca SIAM J300PO quintuplex. SIAM multiplex plunger pump model J300PO quintuplex.

| | | | | | | | |
|--|------------------------|-------------|-------------|---------------|----------------|----------------|----------------|
| ∅ Embolo | (MM) | 53,9 | 50,8 | 47,6 | 44,4 | 41,2 | 38,1 |
| ∅ Plunger | (inches) | 2.1/8 | 2 | 1.7/8 | 1.3/4 | 1.5/8 | 1.1/2 |
| Máxima presión de descarga Maximum discharge pressure | (Kg / CM2) (P.S.I.) | 211 3000 | 239 3400 | 270,9 3855 | 312,80 4450 | 351,54 5000 | 351,54 5000 |
| Galones por min/r.p.m. Gallons per min/r.p.m. | | .384 | .340 | .299 | .260 | .224 | .191 |
| Barriles por día/r.p.m. Barrels per day/r.p.m. | | 13,166 | 11,657 | 10,251 | 8,914 | 7,68 | 6,549 |
| M3/día/r.p.m. M3/day/r.p.m. | | 2,0933 | 1,8530 | 1,6298 | 1,4172 | 1,2210 | 1,0412 |

| VELOCIDAD BOMBA RPM PUMP SPEED R.P.M. | POTENCIA ABSORBIDA INPUT HORSEPOWER HP | HP HIDRAULICO HP HIDRAULIC | GPM | BBLs/ DAY | M3/ DAY | GPM | BBLs/ DAY | M3/ DAY | GPM | BBLs/ DAY | M3/ DAY | GPM | BBLs/ DAY | M3/ DAY | GPM | BBLs/ DAY | M3/ DAY |
|--|---|-------------------------------|-----|-----------|---------|-----|-----------|---------|-----|-----------|---------|-----|-----------|---------|-----|-----------|---------|
| 400 | 300 | 271 | 154 | 5265 | 837 | 136 | 4665 | 742 | 120 | 4100 | 652 | 104 | 3565 | 567 | 90 | 3070 | 489 |
| 350 | 262,6 | 236,6 | 134 | 4610 | 733 | 119 | 4080 | 649 | 105 | 3590 | 571 | 91 | 3120 | 496 | 79 | 2690 | 428 |
| 300 | 225,0 | 202,8 | 115 | 3950 | 628 | 102 | 3495 | 556 | 90 | 3075 | 499 | 78 | 2675 | 425 | 67 | 2315 | 367 |
| 250 | 187,5 | 169 | 96 | 3290 | 523 | 85 | 2915 | 463 | 75 | 2565 | 408 | 65 | 2230 | 355 | 56 | 1920 | 306 |
| 200 | 150 | 139,2 | 77 | 2635 | 419 | 68 | 2330 | 370 | 60 | 2050 | 326 | 52 | 1785 | 284 | 45 | 1535 | 245 |
| 150 | 112 | 101,4 | 58 | 1975 | 314 | 51 | 1750 | 278 | 45 | 1540 | 245 | 39 | 1335 | 212 | 34 | 1155 | 183 |
| 100 | 75 | 67,7 | 38 | 1315 | 209 | 34 | 1165 | 185 | 30 | 1025 | 163 | 26 | 890 | 142 | 22 | 770 | 122 |

Hp absorbida: basado sobre 90 % de rendimiento mecánico/ Input HP: based on 90 % mechanical efficiency.

Volumen de desplazamiento: basado sobre 100 % de rendimiento volumétrico/ Volume: based on 100 % volumetric efficiency.